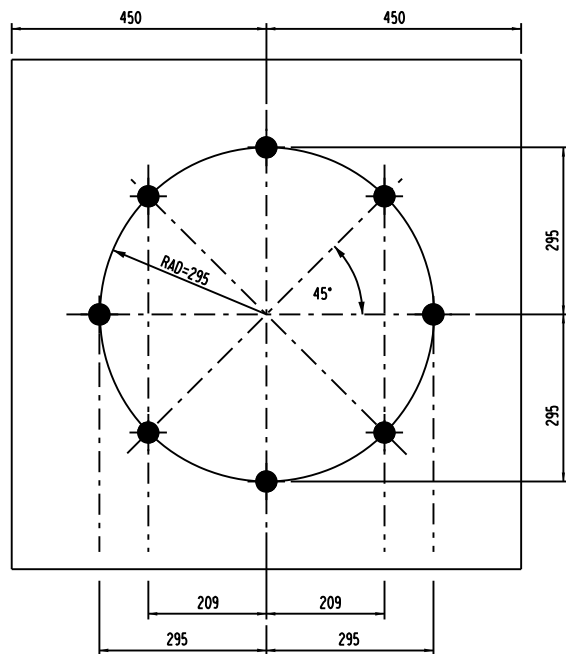
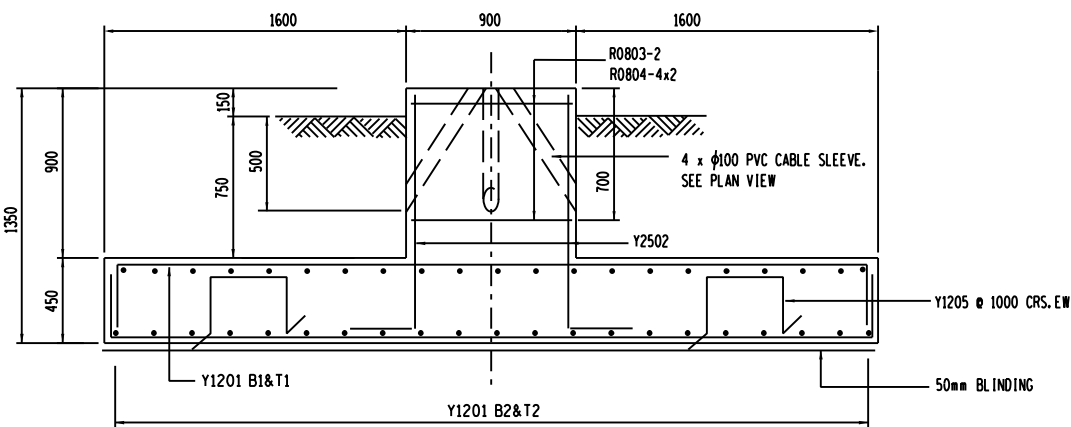


**HD BOLT.**  
( 8 OFF/FOUNDATION.)  
MASS OF ONE H.D.BOLT COMPLETE  
WITH TWO NUTS & WASHER = 10,8kg



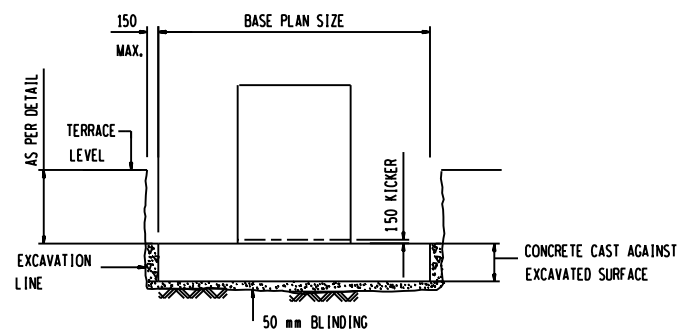
HD BOLT LAYOUT ON PLINTH. (24m)  
N.T.S



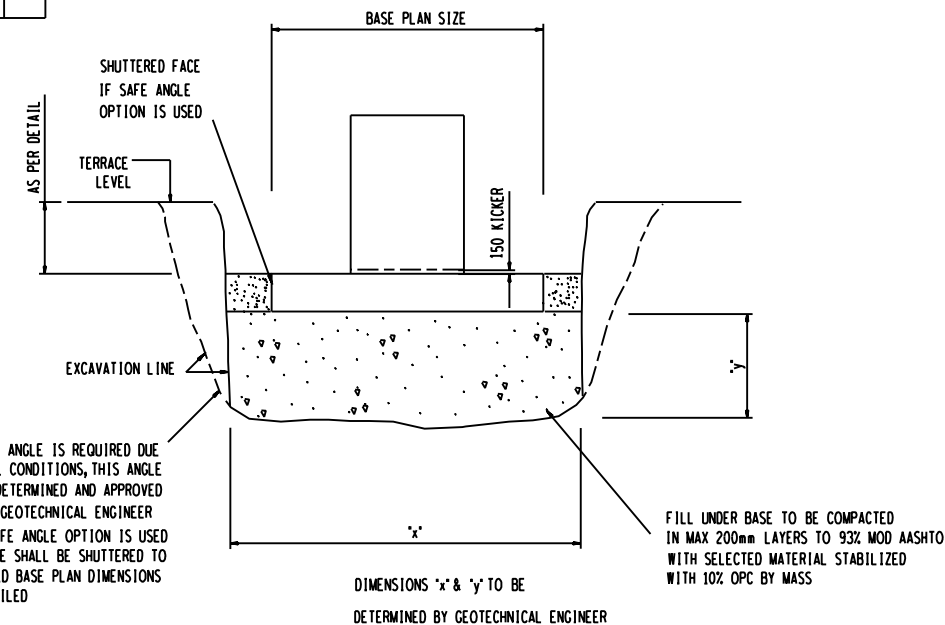
SECTION C-C.

ITEM AND No OFF	Y O R	DIA. MM.	No OFF PER ITEM	TOTAL	CUTTING LENGTH mm	TOTAL LENGTH m	SHAPE CODE	STANDARD SHAPES BENDING DIMENSIONS mm					
								A	B	C	D	E	R
24m FOUNDATION. 1 OFF.	Y	12	01	84	4700		38	360	4040				
	Y	25	02	16	1550		37	1260					
	R	08	03	2	3550		60	840	840				
	R	08	04	8	2450		60	280	840				
	Y	12	05	16	1800		83	400	355	400			

CONCRETE & REINFORCEMENT DETAILS - 24m MAST.



COMPETENT FOUNDING MATERIAL FOUND AT A LEVEL  
NOT EXCEEDING 50 mm BELOW U/S OF  
PLINTH BASE AS DETAILED

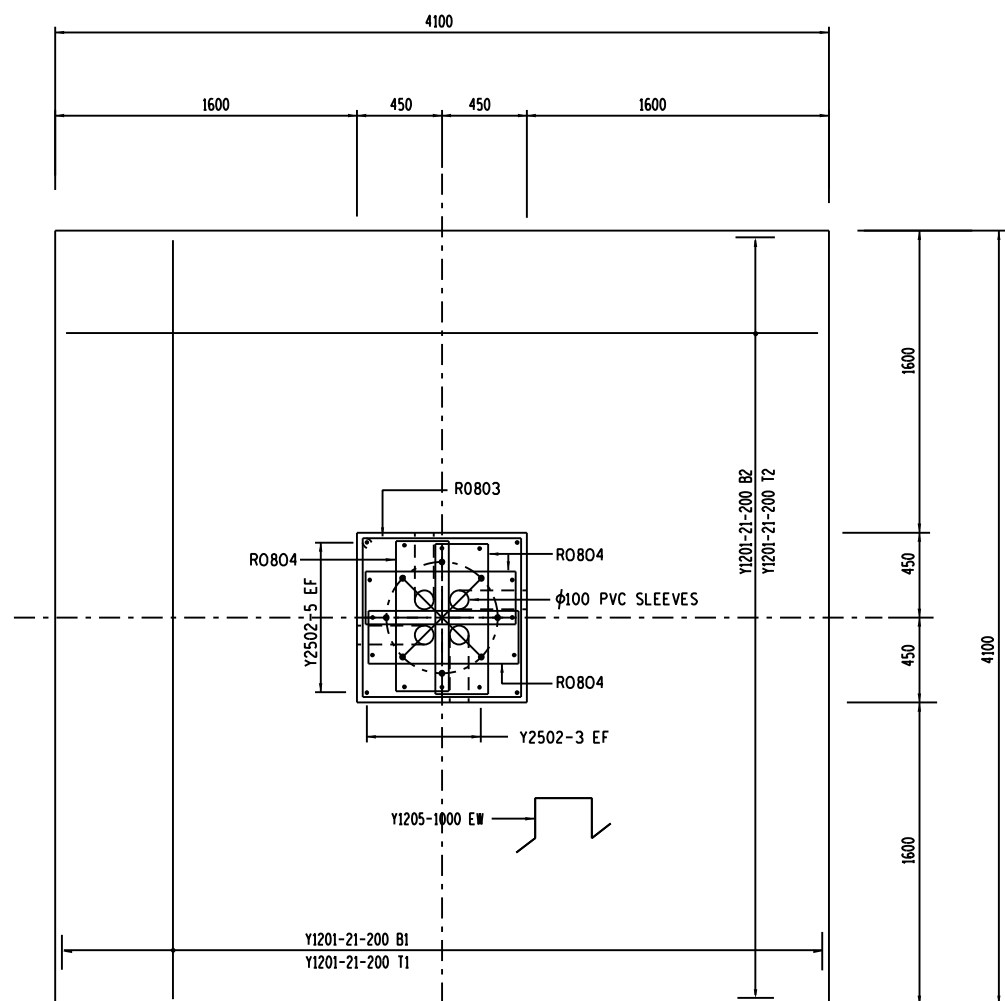


IF SAFE ANGLE IS REQUIRED DUE  
TO SOIL CONDITIONS, THIS ANGLE  
TO BE DETERMINED AND APPROVED  
BY THE GEOTECHNICAL ENGINEER  
WHEN SAFE ANGLE OPTION IS USED  
THE BASE SHALL BE SHUTTERED TO  
REQUIRED BASE PLAN DIMENSIONS  
AS DETAILED

EXCAVATION DETAILS


## NOTES:

- 1.) CONCRETE STRENGTH AT 28 DAYS/STONE SIZE : BLINDING = 15/19  
FOUNDATION = 25/19  
CONCRETE CASTED IN FOUNDATION:  
SLUMP VALUE 75mm (TOLERANCE ±25mm)
- 2.) MIN. COVER TO REINFORCEMENT TO BE 50mm
- 3 a.) HD BOLTS (GRADE 8.8) SUPPLIED BY CIVIL CONTRACTOR COMPLETE  
WITH NUTS & WASHERS TO BE HOT DIPPED GALVANISED TO SANS 121  
b.) THREAD TO BE OVER-CUT TO SANS 121 TO ALLOW FOR THICKNESS  
OF GALVANISING
- 4.) FORMWORK TO EXTEND AT LEAST 150mm BELOW GROUND LEVEL
- 5.) ALL WELDING AND WELDING SYMBOLS TO SANS 10044
- 6.) STEEL TEMPLATE TO BE USED FOR SETTING OUT OF HD BOLTS
- 7.) 30 MPa FLOWABLE NON-SHRINK GROUT UNDER BASE PLATES ONLY  
IF REQUIRED
- 8.) ALL TOP EDGES TO HAVE 20 x 20 CHAMFER
- 9.) ALL WORK TO BE IN ACCORDANCE WITH SANS 1200 SERIES OF SPECIFICATIONS
- 10.) CONCRETE FINISH : TOP OF FOUNDATION - WOOD FLOAT FINISH  
SIDES OF FOUNDATION - SMOOTH OFF SHUTTER FINISH
- 11.) THESE FOUNDATIONS HAVE BEEN DESIGNED TO FOUND ON COMPETENT  
FOUNDING MATERIAL. IN ALL CASES COMPETENCY OF FOUNDING MATERIAL  
MUST BE ESTABLISHED BY A QUALIFIED GEO-TECHNICAL ENGINEER



PLAN VIEW.

REV	REVISION DESCRIPTION	BY	CHKD	AUTH	DATE	0	54/	REFERENCE DRAWINGS
9	HD BOLT & NOTES REVISED		PHD	DBH	DJS	30/12/15		
8	ORG. SHEET NUMBER REMOVED		ARM	DBH	DJS	4/11/03		
7	REDRAWN AND TITLE CHANGED		ARM	DBH	DJS	1/10/99		
6	REINFORCEMENT REVISED		DBH	DBH	DJS	1/5/99		
5	H.D. BOLT LAYOUTS REVISED		ARM	DBH	DJS	2/2/98		
4	H.D. BOLT LAYOUTS REVISED & NOTE 8 ADDED.		ARM	DBH	DJS	30/8/98	4708	10m MAST
3	MEMBERS 03 & 04 REVISED ON 24m MAST.		A. D.	DJS.	MAY/96	21/2/96	4656	14m MAST
2	TITLES CHANGED.		A. D.	A. D.	MAY/96	3/7/95	4657	18m MAST
1	CABLE SLEEVE DETAILS ALTERED.		HBC				4658	24m MAST

DESIGN APPROVED	 Eskom Transmission	24m LIGHT MAST	
M VO ENDE			
DATE 24/11/94			
DESIGN CHECKED			
DBH	©	LAYOUT AND DETAIL OF FOUNDATION	
DATE 24/4/94			
DRAWN BY			
A.D.			
DATE 24/4/94	0.54/4659	SHEET NUMBER	REVISION
SCALE 1:20		0	9